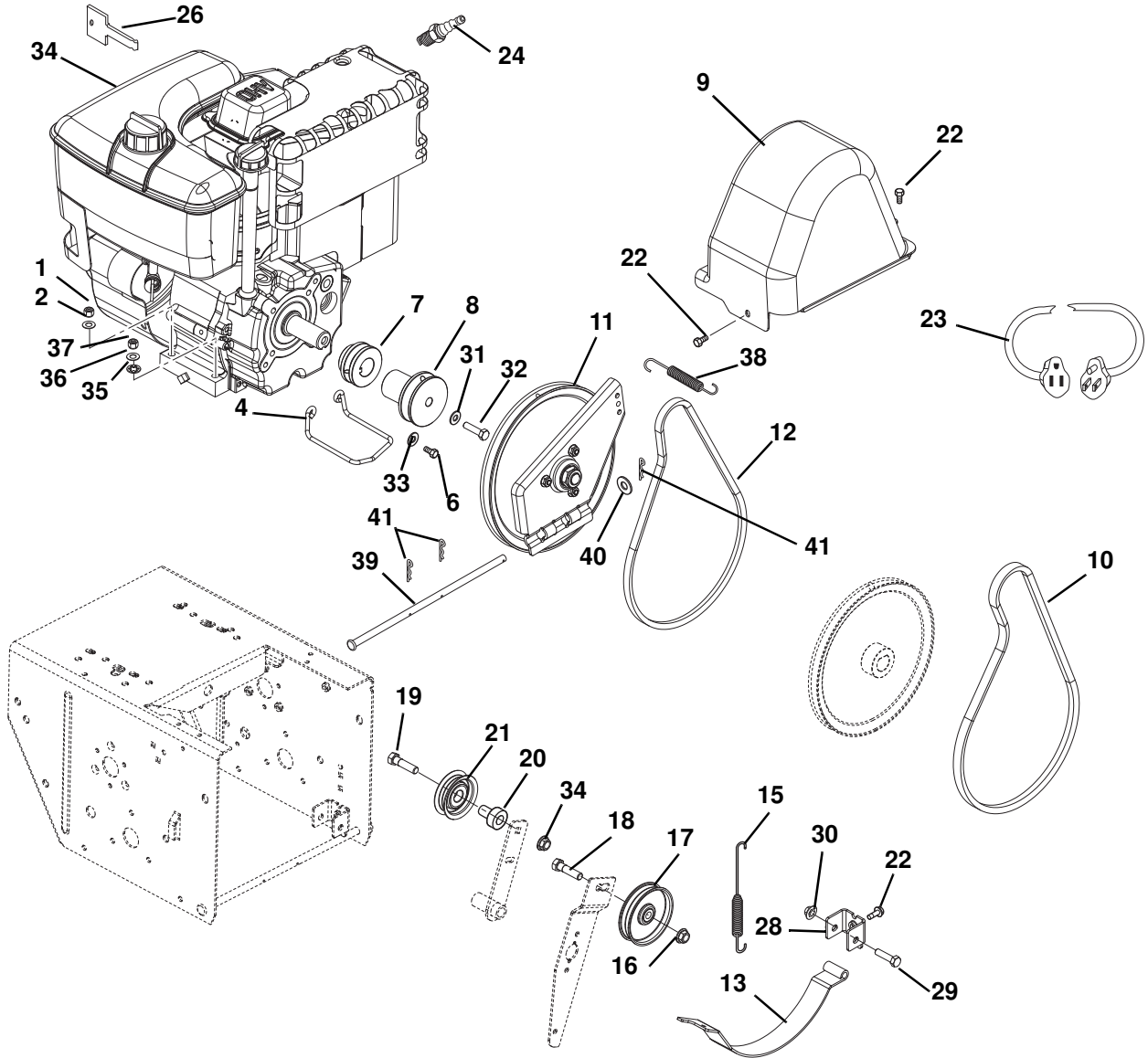


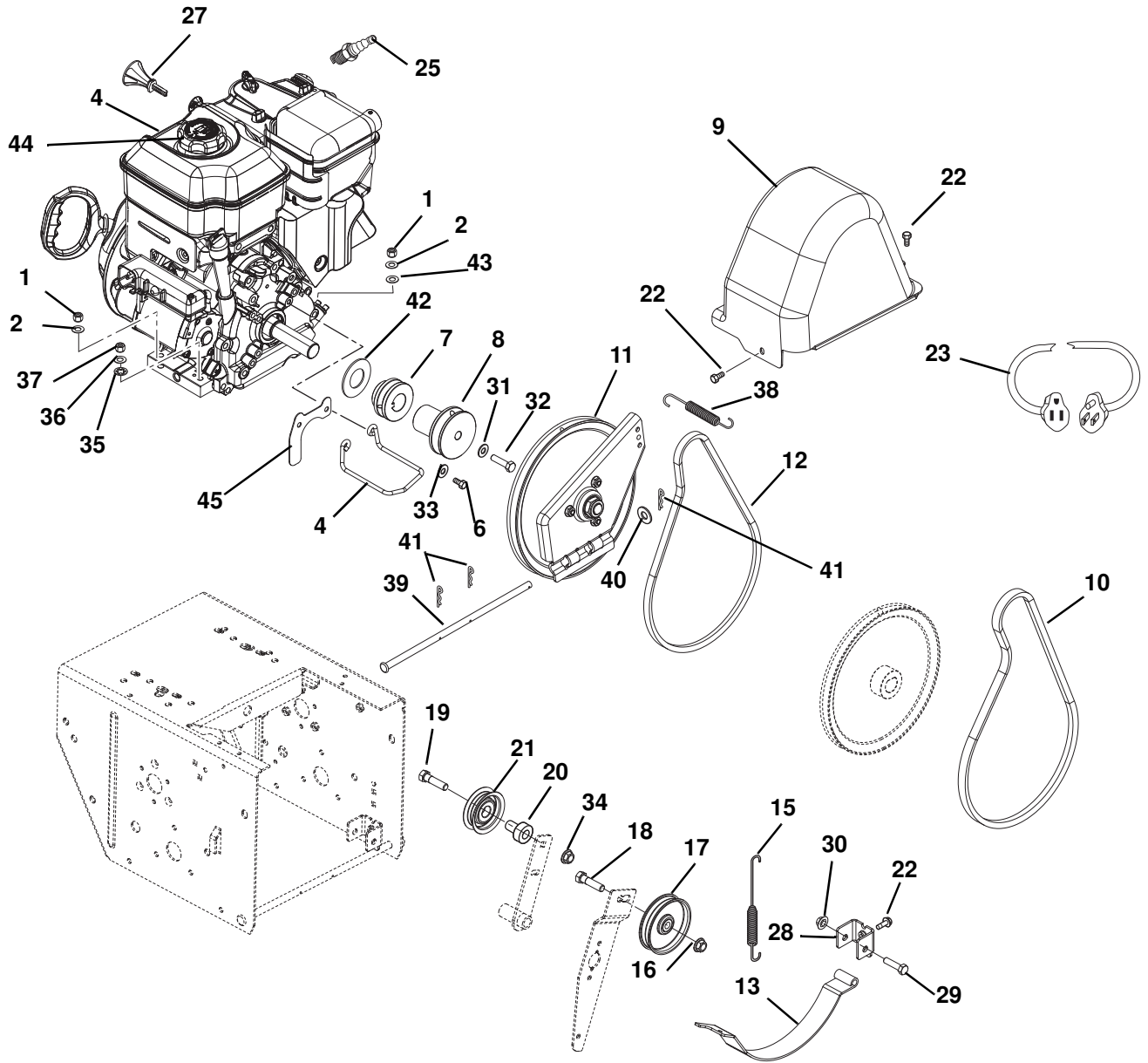
ENGINE AND BELT DRIVE

Model 926001, 002, 003, 004, 005, 006, 101, 102, 103, 300, 301, 302, 303, 304, 500, 501, 502, 504



PS1082

Model 926007, 008, 009, 010, 011, 012



PS1082

ENGINE AND BELT DRIVE

Model All

Item	Part No.	Qty.	Description
1	06529200	3	Nut, Hex .31-18 (500, 501)
	06529200	4	Nut, Hex .31-18
2	06307400	3	Washer, Lock .312 x .097 (500, 501)
	06307400	4	Washer, Lock .312 x .097
3	08200038	1	Engine, 9.25HP Tecumseh LH318SA - 156582H - 120 Volt (001, 101)
	08200039	1	Engine, 9.25HP Tecumseh LH318SA - 156581H - 240 Volt (504)
	08200040	1	Engine, 9.25HP OHV Tecumseh OH318SA - 221825B - 120 Volt (004)
	08200041	1	Engine, 9.25HP OHV Tecumseh OH318SA - 221827B - 240 Volt (301)
	08200043	1	Engine, 11.5HP OHV Tecumseh OH318SA - 221828B - 120 Volt (002, 005, 102)
	08200044	1	Engine, 11.5HP OHV Tecumseh OH318SA - 221826B - 240 Volt (300, 304)
	08200045	1	Engine, 13HP Tecumseh OHV OH358SA - 223842F - 120 Volt (003, 006, 103)
	08200046	1	Engine, 13HP Tecumseh OHV OH358SA - 223841F - 240 Volt (302, 303)
	08200047	1	Engine, 13HP Tecumseh OHV OH358SA - 223843F - 12 Volt (500, 501)
	08200042	1	Engine, 9HP Tecumseh OHV OH318EA - 222719E - (502)
4	08200112	1	Engine, 9.5hp Briggs & Stratton, Powerbuilt 20A1140120E1, 120V (007)
	08200113	1	Engine, 9.5hp Briggs & Stratton, Intek 20B4140121E1, 120V (008)
	08200114	1	Engine, 11.5hp Briggs & Stratton, Intek 21C3140116E1, 120V (009, 010)
	08200015	1	Engine, 13.0hp Briggs & Stratton, Intek 21B4140117E1, 120V (011, 012)
5	00461900	1	Belt Finger
6	05947300	2	Bolt, Hex .31-24 x .75 Grade 5
7	00397100	1	Sheave, Drive
8	00397000	1	Sheave, Attachment
9	00384100	1	Cover, Belt
10	07200020	1	V-Belt 4L 37.06 (001, 002, 004, 005, 007, 008, 009, 010, 011, 012, 101, 102, 300, 301, 304, 502, 504)
	07200021	1	V-Belt 4L 38.00 (003, 006, 103, 302, 303, 500, 501)
11	52602100	1	Plate, Swing Assembly
12	07200101	1	V-Belt,Traction Drive (001, 002, 004, 005, 007, 008, 009, 010, 011, 012, 101, 102, 300, 301, 304, 502, 504)
	07200102	1	V-Belt, Traction Drive (003, 006, 103, 302, 303, 500, 501)
13	52601800	1	Arm, Brake Attachment with Pad
14	00180500	1	Pad, Brake
15	08300017	1	Spring, Tension .056 x .60 x 4.40
16	06542000	1	Nut, Locking Top Flange .38-16
17	07300013	1	Idler, Flat 3.00
18	05957900	1	Bolt, Hex .38-16 x 1.50 Grade 5
19	05947500	1	Bolt, Hex .31-18 x 1.25 Grade 5
20	01213100	1	Spacer, Bearing
21	02457400	1	Idler
22	07412000	4	Screw, Tapping .25-20 x .50 Hex Washer Head Thread Rolling
23	02483100	1	Cord, Extension 110V
24	21533500	1	Plug, Spark
25	21534100	1	Plug, Spark
26	07532000	1	Key, Push/Pull Tecumseh (001, 002, 004, 005, 007, 101, 102, 300, 301, 304, 500, 501)
27	07500012	1	Key, Push/Pull Briggs & Stratton (007, 008, 009, 010, 011, 012)
28	00430751	1	Pivot, Brake
29	05957200	1	Bolt, Hex .31-18 x 2.00 Grade 5
30	06543100	1	Nut, Locking-Top-Flange .31-18
31	06308800	1	Washer, Locking .38 x .094
32	05958600	1	Bolt, Hex .38-24 x 2.0
33	06307400	2	Washer, Locking .312 x .097 Heavy
34	06543100	1	Nut, Locking-Top-Flange .31-18
35	06310500	1	Washer, Lock Internal .31 (500, 501)
36	06437200	1	Washer, Flat-Steel .344 x .688 x .065 (500, 501)
37	06529800	1	Nut, Locking-Center .31-18 (500, 501)
38	08300019	1	Spring, Tension .048 x .50 x 2.8
39	00380900	1	Rod, Housing Pivot
40	06436200	1	Washer, Flat Steel .406 x .812 x .065 (001, 002, 004, 005, 007, 101, 102, 300, 301, 304, 500, 501)
41	06714800	3	Pin, Hair
42	06443000	1	Washer, Flat, Steel 1.062 x 2.0 x .134 (007, 008, 009, 010, 011, 012)
43	06435700	1	Washer, Flat Steel .38 x .875 x .083 (007, 008, 009, 010, 011, 012)
44	07500013	1	Gas cap (007, 008, 009, 010, 011, 012)
45	00486451	1	Guard, Belt Cover, Briggs & Stratton (007, 008, 009, 010, 011, 012)

WHEELS, AXLE AND REDUCTION DRIVE

WHEELS AND AXLE

The wheels are held onto the axle with locking pins. To remove a wheel pull the locking pin and the wheel will slide off.

To remove the axle:

1. Place the unit in upright service position.
20. Remove the bottom plate.
21. Remove both wheels.
22. Drive out roll pin.
23. The axle will slide out either side.

NOTE: Make a record of the positions for the washers and flanges for reassembly.

To install the axle:

1. Slide the axle into the main frame from either direction.
24. Place bearings, washers, and spur gear into the axle in correct order.

NOTE: The spur gear can go on in either way. The nylon flanges must enter into the bushings from the inside out.

25. Insert the woodruff key into the axle and slide the spur gear into position.
26. Move washers into position and drive the roll pins into the axle
27. Replace wheels.

SPROCKET AND CHAIN

A friction wheel is driven and provides power to the axle shaft. Power is transferred using a chain to a sprocket assembly. To replace the drive chain remove both shafts.

To remove pinion shaft:

1. Place unit in up right service position.
28. Remove wheels and bottom plate.
29. Drive out the two roll pins. These two pins are different in diameter. Make note of which pin is in each hole.
30. Slide the shaft out towards the end with the grease fitting.

NOTE: The components on the pinion shaft can all be removed. The hex shaft must be removed (at least partially) to remove the roller chain.

To remove the hex shaft:

(see *Friction Disc Replacement* on page 30).

To install pinion shaft:

1. Slide pinion shaft into the main body with the roll pin hole closest to the end away from the pinion.
31. Put the washer, flange, and pinion over the shaft. The shaft should be through the center of the chain.
32. Position the shaft with pinion and other parts in place.
33. Select the correct roll pin for the hole on the shaft and drive it into position.
34. Drive the second roll pin into the shaft.
35. Grease the pinion using the grease fitting on the end of the shaft.